

Sussex and East Surrey
Clinical Commissioning Groups



Dementia in Worthing (Adur)

Allison Cannon
Chief Nursing Officer

Firstly to say Thank You for your work in achieving...

- A website as well as social media (Facebook, Twitter and Instagram)
- Stagecoach buses becoming dementia friendly
- Southdown Leisure hosting dementia friendly events
- Over 40 businesses and organisations have joined the Alliance and are actively working towards becoming dementia friendly

And reflect on your achievements during the last year...

- Dementia friendly parking spaces in the shopping centre
- Dementia friendly cinema and theatre productions and showings
- Over 1200 dementia friend sessions with over 2000 dementia friends made
- Informal drop in information events that are based in local public areas, such as the library
- Pop up hubs across the locality
- Assisting businesses to join the alliance and become part of the local social action movement
- Assistance for businesses and public places on how to become more dementia friendly
- Dementia friendly dentists and GP surgeries
- Being able to support people through the various transitions of the disease

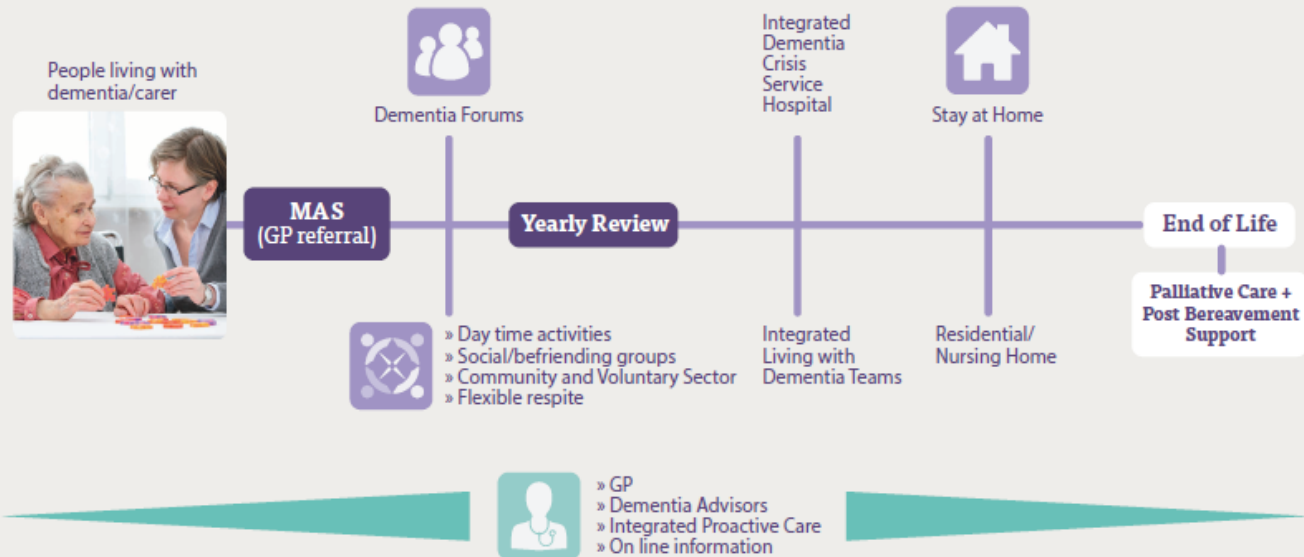
The West Sussex Context

- Joint Dementia Framework launched 2014 – reviewed in 2019
- Bids for additional funding to help shift spend from complex and intense needs to promotion of prevention and independence have had limited success
- In 2014 there were around 13,000 people living with dementia, in 2017 it was estimated to be 14,400. Numbers set to rise a further 23% by 2025
- The framework has driven progress to improving the experience of people living with dementia but more needs to be done

The Pathway in outline

The dementia care pathway

This is a pictorial overview of the pathway, the full length framework gives more complete information.



Achievements

- Improved diagnosis rates
- Post diagnostic support and crisis prevention
- Support for family and friends carers
- Growth in Dementia Friendly Communities
- Support for people in hospital and on discharge
- Better access to dementia skills training
- Improved end of life care for people living with dementia

Successes

An increasingly Dementia Friendly Community

- 9 Dementia Action Alliances in county
- Worthing DAA – amongst the largest (47 members on 23 May, 2019)
- Increased co-ordination between health, social sector and community services, via multiple forums including DAA

Where we need to work together to achieve more...

- Further improve links between services so that the experience is of seamless support
- Better identification of and support to people with dementia
- Reduce stigma – provide information and advice in a timely and appropriate manner
- Recognise, celebrate, value and support carers more effectively

Where we need to work together to achieve more...

- Further reducing waiting times for diagnosis
- Address capacity issues within dementia services through partnership
- Early diagnosis and ongoing support for people with Learning Disabilities and minority groups
- Enhance Dementia Friendly Communities to ensure sustainability
- Enhance support for people with dementia and their families
- Reduce stigma and improve engagement through more joined up approach to information and advice
- Better access and choice around permanent and replacement residential/nursing care
- The routine practice of advance care planning

Our next steps

- Consideration of new national guidance and policies, examples of best practice and local transformation plans
- Maintain engagement and support with a wide range of stakeholders
- Implement recommendations of the Dementia Framework Review 2019
- Refresh the Framework to reflect local need in the context of a coherent Sussex Dementia Strategy